



**INSTANT HD**

Modular Scaffolding System

# Heavy Duty Modular Aluminium System

**INSTANT  
UPRIGHT**



## **STRONGER**

Patented  
cold-form joint



## **LIGHTER**

Weighs  
50% less



## **SAFER**

Reduced  
risk of injury



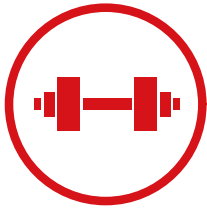
## **FASTER**

Assembly  
times reduced



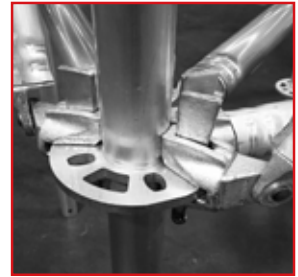
## **REDUCED COST**

Up to 30%  
reduction



## STRONGER

Patented cold-form joint provides 100% improved load capacity over welded aluminium joints



## LIGHTER

Constructed from high strength aluminium alloy. Instant HD system weighs 50% less than comparable steel systems



## FASTER

Reduced component weights and a lower volume of components means assembly times can be reduced by over 20%



## SAFER

Lighter components reduce the risk of injury and long term physical strain on workers



## REDUCED COST

Up to 30% reduction in labour, transport and storage costs





# Cutting-edge technology is the cornerstone of what we do

Instant HD is at the forefront of design in modular scaffolding systems. Manufactured from aluminium, it's lightweight, incredibly strong and highly durable. This makes it the system of choice in heavy-duty applications where safety, speed and versatility are paramount.

Our patented Coldform jointing process is a technological advancement on our original Rib-Grip jointing system successfully used in our aluminium towers for over 50 years. Instant Upright remain the market leader in the use and development of this technology.

## About us

Instant UpRight is a global brand, pioneering the design and manufacture of aluminium access solutions for all sectors of industry.

With a team of renowned industry specialists spanning multiple disciplines, we've an unequalled heritage of supporting high-profile projects around the globe. Our purpose designed access solutions deliver performance to the highest standards in the toughest environments and are recognised for their longevity.

Manufacturing and design quality are fundamental to Instant UpRight's success. Our state of the art European factory includes an advanced production facility, world class manufacturing, first class engineering support team, and ISO 9001 quality accreditation.

**For more details please contact our expert team on:**

**T:** +47 23 19 11 00

**E:** [post@instant.no](mailto:post@instant.no)



Instant Norge AS  
Deliveien 7  
N-1540 Vestby



For safe use and assembly please refer to manufacturer's assembly guide. Specifications are subject to change without notice.



[WWW.INSTANT.NO](http://WWW.INSTANT.NO)